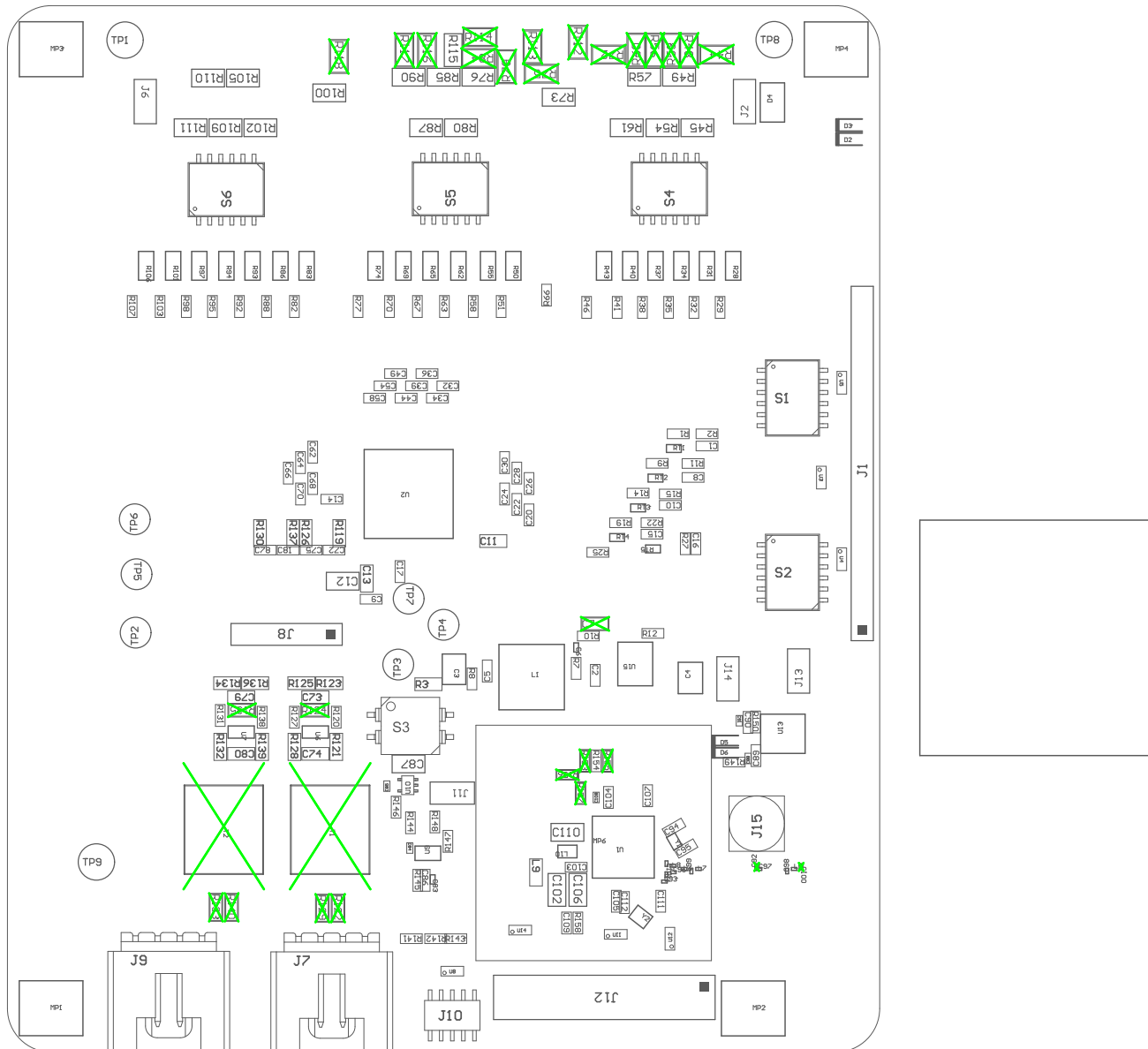
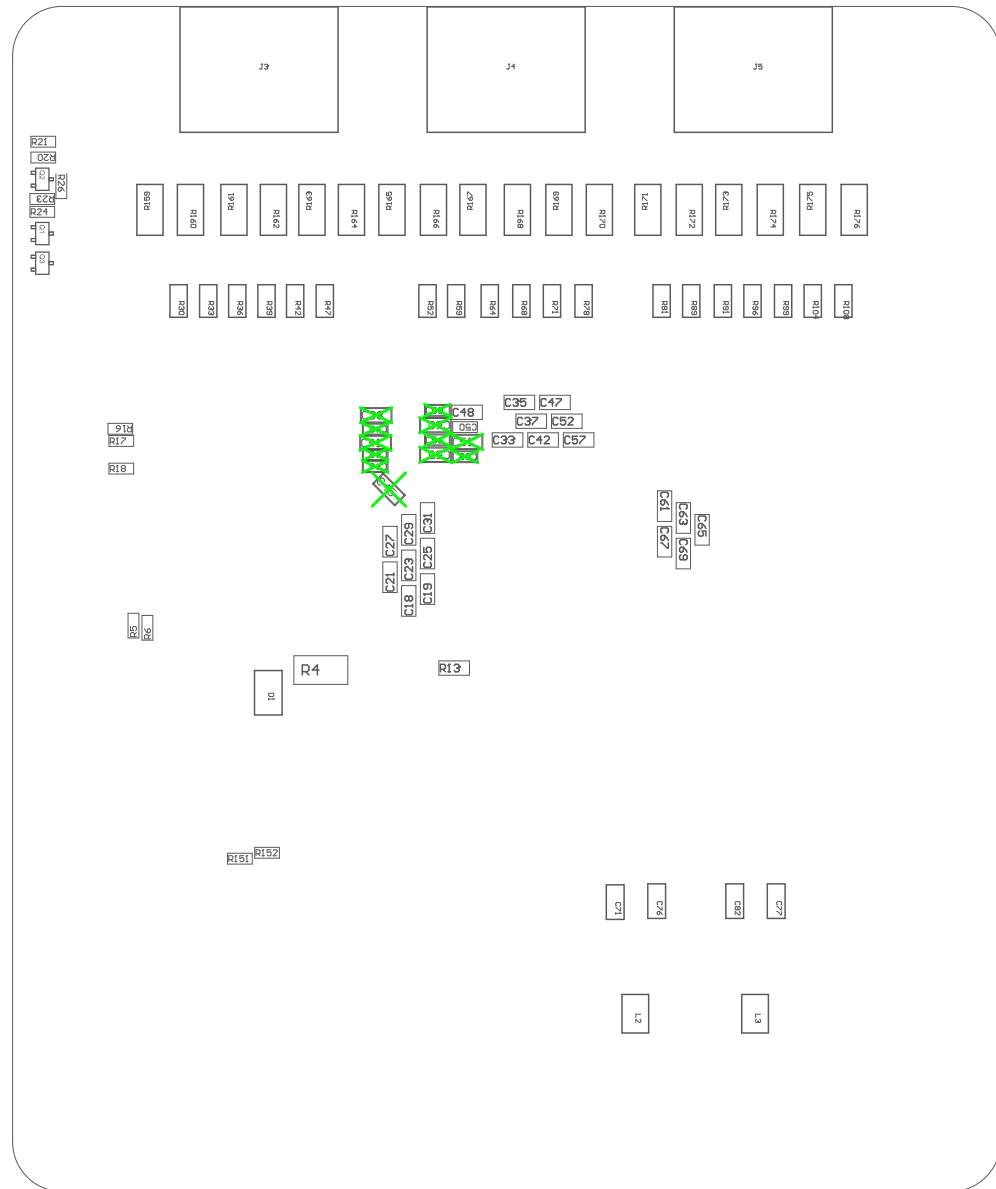


Z21 ■ These assemblies are ESD sensitive, ESD precautions shall be observed.  
 Z22 ■ These assemblies must be clean and free from flux and all contaminants. Use of no clean flux is not acceptable.  
 Z23 ■ These assemblies must comply with workmanship standards IPC-A-610 Class 2, unless otherwise specified.  
 Z24 ■ Via in PADS must be filled



COMPONENTS MARKED 'DNP' SHOULD NOT BE POPULATED.  
 ASSEMBLY VARIANT: 001

PCB VIEWED FROM TOP SIDE	BOARD #: MCU136	REV: A	SUN REV: Not in version control
	TID #: N/A		
PLOT NAME = Top Assembly Drawing	GENERATED : 1/27/2026 11:18:21 AM	TEXAS INSTRUMENTS	



COMPONENTS MARKED 'DNP' SHOULD NOT BE POPULATED.  
ASSEMBLY VARIANT: 001

PCB VIEWED FROM BOTTOM SIDE	BOARD #: MCU136	REV: A	SUN REV: Not in version control
	TID #: N/A		
PLOT NAME = Bottom Assembly Drawing	GENERATED : 1/27/2026 11:18:22 AM	TEXAS INSTRUMENTS	